

SUNKIST Commercial JUICER

Quiet, yet heavy-duty motor

Unique oscillating strainer

Able to extract 10-12 gallons an hour

Listed by UL, NSF Int'l, CSA Int'l & VDE

Interchangeable extracting bulbs

Two-year warranty

Years of proven performance – originally patented in 1918



Available from your foodservice equipment dealer

Contact us for the one nearest you:

(800) 383-7141 or (909) 933-2236 • Fax (909) 933-2169

Foodservice Equipment Sales, Sunkist Growers

720 East Sunkist Street, Ontario, CA 91761

www.sunkistfs.com/equipment



Sunkist

Commercial Juicer #8

Parts Information

Effective date July 15, 2005

Specifications

Chrome-plated steel housing.
Corrosion proof plastic dome, spout & bowl support.

Safe...Listed by Underwriters Laboratories, CSA International®, NSF International® & VDE as applicable.

Shipping weight37 pounds

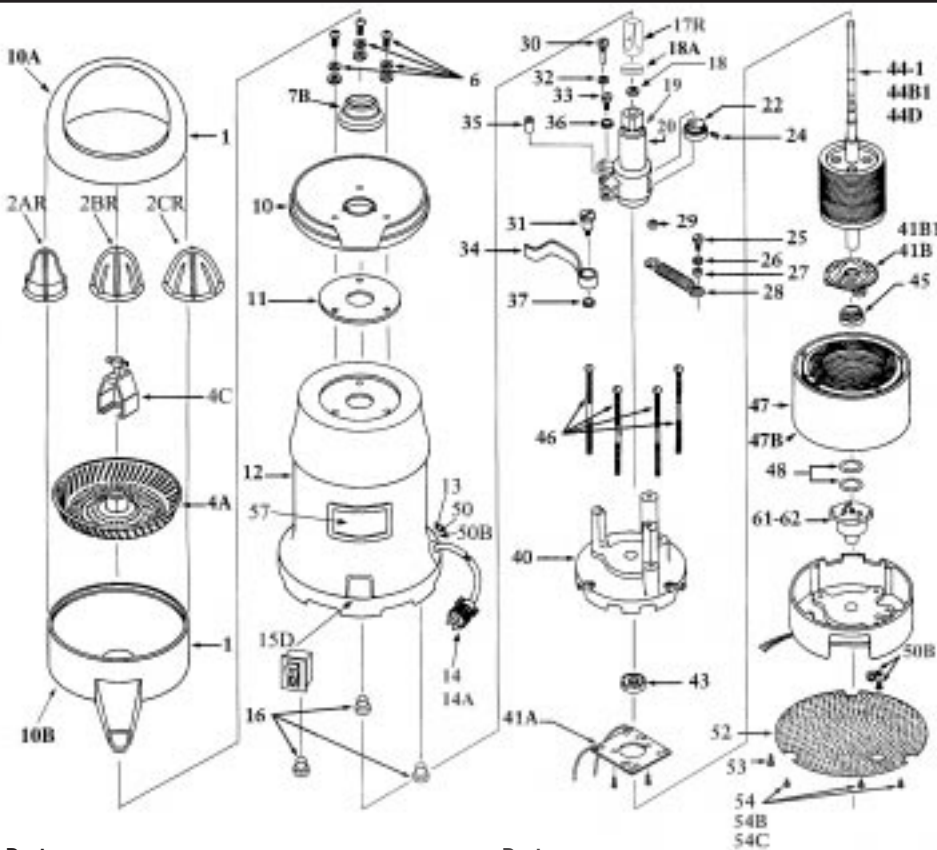
Net weight31 pounds

Overall dimensions ...17" high 8" diameter

Horsepower1/4

Cube1.12

Carton size22 3/4" x 9 3/4" x 9 3/4"



| Part Number | Description |
|-------------|---|
| 1. | Plastic Bowl Assembly incl. dome (10A), spout (10B) & bowl support (10) |
| 2. | Extracting Bulb Set w/metal insert (only use with 17 or 17C) A. Lemon/Lime fits #8 model B. Orange fits #7 & #8 models C. Grapefruit fits #7 & #8 models |
| 2R. | Extracting Bulb Set w/o metal insert (Only use with 17R) AR. Lemon/Lime BR. Orange CR. Grapefruit |
| 3. | Lever Lock & Screws for Strainer (for #7 juicer - not illustrated) |
| 4. | Strainer w/Lever Lock & Screws (for #7 juicer - not illustrated) |
| 4A. | Strainer for #8 juicer |
| 4C. | Strainer Puller for #8 juicer |
| 6. | Bowl Support Screws, Spacers, Washers (set of 3) |
| 7. | Umbrella Ring w/Set Screw & Gasket (not illustrated) |
| 7B. | Umbrella Seal (only for use on grooved eccentric housings, replaces 7, 8 & 9) |
| 8. | Umbrella Ring Set Screw (incl'd w/7) (not illustrated) |
| 9. | Umbrella Ring Gasket (incl'd w/7) (not illustrated) |
| 10. | Plastic Bowl Support only (incl'd w/#1) |
| 10A. | Plastic Dome only (incl'd w/#1) |
| 10B. | Plastic Spout only (incl'd w/#1) |
| 11. | Bowl Support Gasket |
| 12. | Chrome Motor Housing |
| 13. | Electric Cord Bushing (use w/ 50B) |
| 14. | Electric Cord 115/60 |
| 14A. | Rubber Cord - Export |

| Part Number | Description |
|-------------|---|
| 15. | Toggle Switch w/Switch Guard (not illustrated) |
| 15D. | Rocker Switch w/Switch Seal |
| 15E. | Connectors for 14A & 15D (set of 4) (not illustrated) |
| 16. | Rubber Feet (set of 3) |
| 17. | Shaft Tip w/Pin (not illustrated) (only use with 2A, 2B, and/or 2C) |
| 17C. | Shaft Tip w/Pin (graduated tip) (not illustrated) (only use with 2A, 2B, and/or 2C) |
| 17R. | Shaft Tip w/Pin (flat tip) (only use with 2AR, 2BR, and/or 2CR) |
| 18. | Eccentric housing Gasket (incl'd w/#20) |
| 18A. | Shaft Tip Gasket (fits 17C) |
| 19. | Brass Tube |
| 20-7. | Eccentric Housing w/Bearings, Gasket & Brass Tube #7 Juicer |
| 20-8. | Eccentric Housing w/Bearings, Gasket & Brass Tube #8 Juicer |
| 20-8C. | Eccentric Mechanism #8 Juicer |
| 22. | Ecc. Hub w/Bearing & Screw |
| 24. | Ecc. Hub Hex Screw 1/4-20x1/2 |
| 25. | Spring Screw to Motor Mount 10-32 |
| 26. | Lock Washers incl. 36 (2) & 37 (3) |
| 27. | Bronze Bushing Coil Spring to Motor Mount 3/64 x 3/8 x 1/4 |
| 28. | Coil Spring |
| 29. | Bronze Bushing Coil Spring to Ecc. Housing 3/64 x 3/8 x 3/16 |
| 30. | Arm Screw - Small 1/4-32 x 1 1/16 |
| 31. | Arm Screw - Large 1/4-20 x 2 9/32 |
| 33. | Spring Screw to Ecc. Housing 1/4-32 |
| 34. | Eccentric Arm |
| 35. | Ecc. Arm Bronze Bushing 1/2 x 3/16 x 3/16 |
| 36. | Lock Washer, 3/16, Internal Tooth |
| 37. | Lock Washer, 1/4, Internal Tooth |

| Part Number | Description |
|-------------|--|
| 40. | Top Motor Casting |
| 41A. | Stationary Motor Switch - Howell Motor |
| 41B. | Centrifugal Motor Switch 115V - Howell Motor |
| 41B1. | Centrifugal Motor Switch 230V - Howell Motor |
| 43. | Motor Bearing Top or Bottom - Howell |
| 44-1. | Rotor w/shaft Howell Motor 115/60 |
| 44B1. | Rotor w/shaft Howell Motor 230/50 |
| 44D. | Rotor w/shaft Howell Motor 230/60 |
| 45. | Motor Bearing Top or Bottom - Ohio |
| 46. | Motor Screws (set of 4) |
| 47. | Stator (winding) - Howell Motor 115/60 |
| 47B. | Stator (winding) - Howell Motor 230/50 |
| 48. | Tension Washers - Howell Motor (set of 2) |
| 50. | Electric Cord Strain Relief for J-2 |
| 50B. | Electric Cord Strain Relief for J-1, J-4 & J-5 |
| 52. | Perforated Base Plate |
| 53. | Ground Screw w/Lock Washer for J-1, J-4 & J-5 (set of 2) |
| 54. | Base Plate Screws for J-1, J-4 & J-5 (set of 3) |
| 54B. | Tamper Proof Screws for Base Plate on J-2 (set of 3) |
| 57. | Logo Plate, Label and Fasteners |
| 61. | Thermal Overload 115/60 - Howell Motor |
| 62. | Thermal Overload 230/50 - Howell Motor |
| 64. | Model #7 or #8 Motor - 115/60 4.3 amp - 1725 rpm |
| 65. | Model #7 or #8 Motor - 230/50 2.5 amp - 1425 rpm |
| 67. | Model #7 or #8 Motor - 230/60 2.2 amp - 1725 rpm |